



CONSERVING NATURE IN CENTRAL PRINCE COUNTY

*Conservation Options
for Landowners and
Neighbours*



ISLAND
NATURE
TRUST

ABOUT US

Island Nature Trust is a not-for-profit, non-government organization that has been dedicated to protecting Natural Areas in Prince Edward Island since 1979.



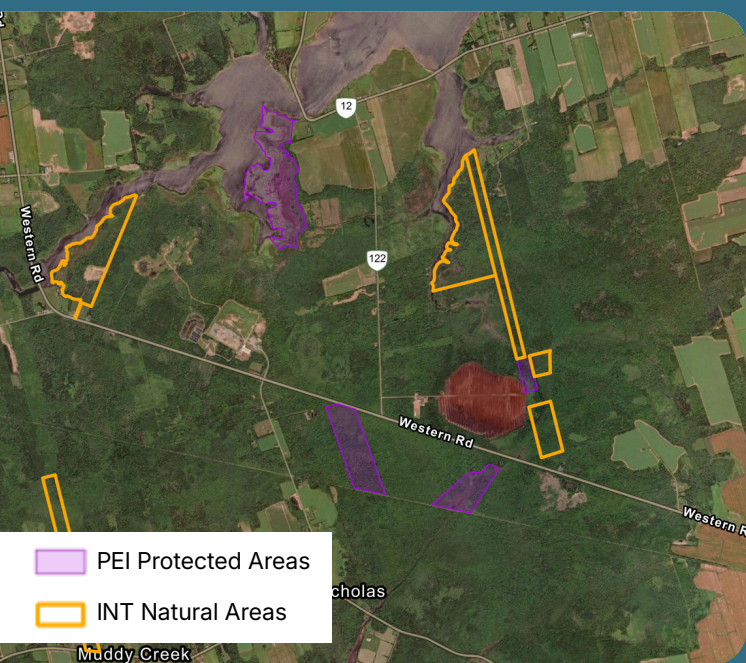
WHAT DO WE DO

Island Nature Trust protects PEI's natural landscapes for the benefit of all Islanders. This is accomplished by acquiring and stewarding natural areas, promoting private land protection, and monitoring for species at risk.



WORKING TOGETHER

Island Nature Trust is looking to connect with landowners interested in working together to protect the natural landscapes of Central Prince County. This region of Prince Edward Island is known for its expansive peatlands and red maple-eastern white cedar swamps, which are home to a diverse range of species. Conserving these features helps support provincially rare and federally listed species at risk.



LANDOWNER BENEFITS

Depending on the conservation method, land protection can offer various benefits, including partial relief from property taxes on protected land, capital gains tax relief for qualifying land donations and partial sales, exemptions from land holding limits, and perpetual protection from development and resource exploitation.

CONSERVATION PRIORITIES

LOCATION & CONNECTIVITY

Protecting land around existing natural areas such as the Edd & Ruby McNeill Natural Area and the MapleCross - Nebraska Creek Natural Area will support habitat for all forms of wildlife, thus improving:

BIODIVERSITY & ECOSYSTEM HEALTH

This region is characterized by lowland forests that are dominated by red maple and many important wetlands and watercourses. These areas are sensitive to disturbance and contain important habitat for:

SPECIES-AT-RISK

Blue felt lichen, a species whose Canadian populations are limited to the Maritimes and are only found in this region of PEI, is sensitive to pollution and serves as an indicator of air quality. The Canada Warbler, a federally at-risk migratory songbird, is also present here. Both species face population declines largely due to habitat loss and fragmentation.



HOW YOU CAN HELP

Scan the QR codes to learn more!



BECOME A GUARDIAN



Volunteer as a Conservation Guardian to help INT monitor Natural Areas in your community. Scan the QR code or reach out to to learn more.

PROTECT LAND

Do you own property with valuable wildlife features that you want to protect? If you're interested in stewarding, selling, donating, or bequeathing your land, scan the QR code or contact us using the information on the back to learn more.



Canada Warbler (*Cardellina canadensis*)

Contactez-nous pour obtenir une brochure en français.



**ISLAND
NATURE
TRUST**



-  P.O. Box 265
Charlottetown, Prince Edward Island
C1A 7K4
-  islandnaturetrust.ca
-  admin@islandnaturetrust.ca
-  (902) 892-7513

This project was undertaken with the financial support of:
Ce projet a été réalisé avec l'appui financier de :
Ula eluwasik wejiaq wjit suliewey apoqnmasuti wejiaq:



Environment and
Climate Change Canada

Environnement et
Changement climatique Canada

