



ISLAND
NATURE
TRUST

NOVEMBER 2023
#159

*Dedicated to the Protection of
Natural Areas in Prince Edward
Island Since 1979*

What kind of

**CHAMPION
FOR NATURE**

are you?

Magazine

INT

Be A Champion For Nature is an invitation to join a growing community of nature enthusiasts dedicated to preserving PEI's natural beauty and biodiversity.

We believe that each person has a unique connection to nature and their own way of contributing. We've created four distinct pathways for you to become a Champion for Nature.

In this issue, explore 'Invest in Nature' and 'Be Creative for Nature.'

TABLE OF CONTENTS

4-6 **Be A Champion for Nature:**

Join us in making a lasting impact through a method of support tailored to you.

INVEST IN NATURE

7-9 **The Judson Family:**

Honoring their vital land donation for coastal headland conservation.

10-12 **Growing a Legacy:**

Stories of impact from our Seed Tree sponsors.

13-18 **Safeguarding the Wabanaki-Acadian Forest:**

Help us reach our matching campaign goal by March 31, 2024.

BE CREATIVE FOR NATURE

19-21 **'If I Could Hug an Island':**

An interview with musician Noah Malcolm whose heartwarming song is raising money for post-Fiona conservation efforts.

22-25 **Launching 'Flitt's Call':**

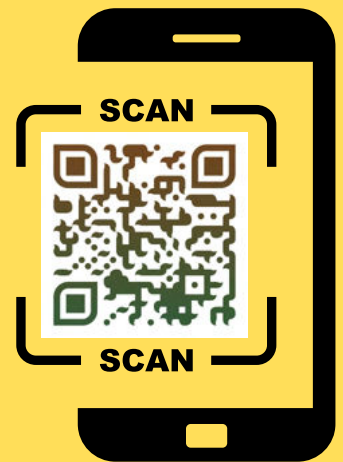
Kara Griffin's interview on her new book and collaborative journey with INT for PEI's young readers.

26-30 **'Bridging the gap with private stewardship:**

Exploring protection opportunities for landowners.

31 **Staff Profile:**

Kelly Rivera, Digital Content Specialist.



www.islandnaturetrust.ca

Throughout the magazine you will see QR codes accompanying some articles. The codes are a gateway to additional online info & resources.

When you see a code simply open your smartphone camera app, aim at the code and click the pop-up link on your screen. You will then be taken directly to the article or page on your smartphone browser.

OUR **CHAMPIONS** FOR NATURE IN THIS ISSUE:

INVEST IN NATURE

The Judson Family



Marie-Ann Bowden

BE CREATIVE FOR NATURE



Kara Griffin



Noah Malcolm

BE A CHAMPION FOR NATURE

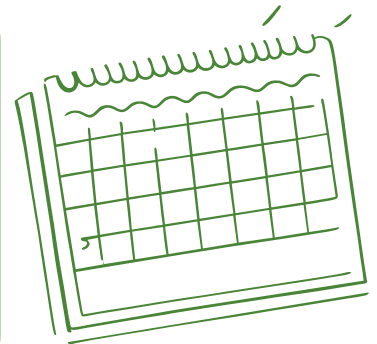


*Join us in making a lasting impact
through support tailored to you*

Island Nature Trust welcomes you to embark on an extraordinary journey. We are delighted to introduce 'Be A Champion for Nature,' an initiative that will transform the way you can engage with and support our mission. This campaign is not just about awareness; it is a heartfelt invitation to join a growing community of nature enthusiasts, individuals, and organizations who share a profound passion for preserving the natural beauty, threatened ecosystems and the biodiversity of Prince Edward Island.

A TIMELY LAUNCH: NOVEMBER MAGAZINE FEATURE

Why November, you may wonder? We've carefully timed the launch of 'Be A Champion for Nature' to ignite support through cash donations, aligning with the holiday season's spirit of giving. Your participation during this time isn't just a charitable act; it's a gift to our Island, making a meaningful impact when it matters most.



DISCOVER YOUR PATH AS A CHAMPION OF NATURE

We believe that each person has a unique connection to nature and their own way of contributing to our cause. That's why we've created four distinct pathways for you to become a Champion for Nature, based on your motivations and interests. In this issue, we'll explore the first two segments: 'Invest in Nature' and 'Be Creative for Nature.'



INVEST IN NATURE: NURTURING OUR NATURAL HERITAGE

If you're passionate about preserving Prince Edward Island's natural beauty and securing a sustainable future, 'Invest in Nature' might be the ideal path for you. This segment celebrates individuals and organizations who support our mission through financial contributions and land donations. By choosing to invest in nature, you're nurturing the very roots of our conservation efforts.

In this issue, we are honoured to feature the Judson family, who generously donated land in Alexandria to expand the protected Crown Point headland. This natural jewel teems with wildlife, remaining one of the few coastal headlands close to Charlottetown that is untouched by private or commercial development. Their contribution is a testament to the impact individuals and families can make on preserving the Island's natural treasures.

We'll also introduce you to Charlottetown Toyota and Marie-Ann Bowden, both sponsors who contributed to our Seed Tree initiative. Their support extends beyond mere sponsorship, bolstering diverse forest networks on the Island and emphasizing the crucial role of community involvement in our mission.

Lastly, we'll explore why donating cash to our 'Match A Patch' campaign is the simplest route to investing in nature. Your donation, no matter how large or small, is tripled by contributions from the province of PEI and MapleCross Fund to leverage more dollars for strategic purchases of ecologically important land.

BE CREATIVE FOR NATURE: THE ART OF CONSERVATION

Creativity knows no bounds, and in this segment, 'Be Creative for Nature,' we invite artisans, artists, entrepreneurs, and creative minds to make a difference. By selling your products or organizing events, you can fundraise for our cause. This creative approach helps us interpret our work through an artistic lens and brings fresh, innovative ways to support nature conservation.

In this issue, we are thrilled to showcase local musician Noah Malcolm, who composed a heart-warming song titled 'If I Could Hug an Island' to raise funds for Island Nature Trust. His melodies beautifully capture the essence of our Island and the desire to protect it following the impact of post-tropical storm Fiona.

We are also delighted to feature local author Kara Griffin, who penned a remarkable book in partnership with Island Nature Trust. The book revolves around a little bank swallow named Flitt, who, upon discovering that his Prince Edward Island home is changing, shares an urgent call to remind us that we are all connected to this beautiful and fragile planet. Kara's book eloquently highlights the importance of our mission and the interconnectedness of all life on our Island.



YOUR CHAMPIONS, YOUR COMMUNITY

We believe in celebrating the individuals who become champions of nature. That's why, across our communication channels – from social media and email newsletters to our quarterly magazine and the yearly Impact Report – you'll find regular features on real people who have made a difference. Their stories offer a glimpse into the tangible impact of your support.

READY TO BEGIN YOUR JOURNEY?

Join us as we embrace the 'Be A Champion for Nature' campaign and explore the pathways of 'Invest in Nature' and 'Be Creative for Nature.' It's a journey that celebrates diversity and the unique ways each of us can contribute to the preservation of our Island's treasures.

In our next issue, we'll delve deeper into 'Be a Guardian for Nature,' where you can get your hands dirty by actively participating in conservation efforts, and 'Be Outspoken for Nature,' a platform for spreading awareness online and advocating for our Island's natural wonders. Stay tuned for more ways to become a Champion for Nature!

As we embark on this exciting journey, we're also gearing up for a campaign landing page on the INT website. This interactive feature will help funnel visitors to the four distinct ways of becoming a Champion for Nature, based on their preferences and motivations. It ensures a personalized and user-friendly experience for all visitors, making your journey even more engaging and meaningful. We'll need your help to promote the campaign with your friends, family, and colleagues once the landing page is live. Stay connected and be ready to share the message with your community!

Lastly, we humbly thank every supporter who has contributed to our cause throughout our 40-year history. Each of you is a Champion for Nature.

With gratitude and excitement,

Island Nature Trust Team





THE JUDSON FAMILY

HONORING THEIR VITAL LAND DONATION FOR COASTAL HEADLAND CONSERVATION

In the inaugural edition of the "Invest in Nature" segment, we celebrate the profound impact that land donations can have on conserving Prince Edward Island's natural landscapes, especially when they connect to already protected lands. While financial contributions are instrumental in Island Nature Trust's mission to protect the Island's natural heritage the act of donating land is a testament and legacy to the lasting commitment of individuals and families to safeguard the Island's ecological diversity.

In this special feature, we highlight the extraordinary contribution of the Judson family, who generously donated the 117-acre Judson Salt Marsh Natural Area in Alexandra to expand the protected Crown Point headland. This natural gem, already protected as the 182-acre Crown Point - Wjikijek Natural Area, was threatened by development due to its proximity to Charlottetown and Stratford and has been at the heart of Island Nature Trust's recent conservation efforts.

CORRIDORS OF CONNECTIVITY

The Importance of Expanding Protected Areas

Island Nature Trust's mission depends on fundraising to acquire interconnected natural areas, preserving the very landscapes that define Prince Edward Island. These protected sanctuaries offer shelter and habitat to a myriad of species while ensuring the sustenance of our natural resources, benefiting the Island's entire community. While the trust acquired the initial Crown Point headland in March 2020, securing this land was no small feat. This achievement was made possible by the collective support of Environment Canada, the MapleCross Fund, and approximately 100 individual donations from Islanders.

This fundraising campaign, driven by the Trust and the public, illustrated the power of collective action. It underscored the Island community's shared commitment to the protection of the Island's natural heritage. But the story doesn't end there.



THE JUDSON FAMILY A PIVOTAL CONTRIBUTION

The Judson family's decision to donate their land adds a new chapter to the Crown Point conservation story. Island Nature Trust approached the Judson family, recognizing that expanding the protection of this headland aligns with its mission to create a mosaic of interconnected natural areas, ensuring the ecological health of the Island's landscapes and the well-being of its diverse species.

The Judson family's legacy of protecting their land, spanning generations, exemplifies the spirit of Island Nature Trust's mission. "Climate change and encroachment by humans on the natural space can have a major impact on the marsh and its inhabitants," William Judson warns. "By joining this land with the previously donated adjacent land, INT is creating a large, conserved area with several unique habitats which allows many species to thrive."

"My entire family has actively worked to protect the land and keep it in its natural state," says William, echoing the sentiment of many Islanders who share a profound connection to the land. "When we were approached by the INT, we decided the timing was right for us to donate the land to ensure its continued protection."

A LIFELONG CONNECTION

"My father and mother, Donald and Virginia Judson, purchased this land as part of the family farm in the late 1960s," William shares. "We spent many years, while growing up, experiencing what the marsh had to offer - picking cranberries, hunting ducks in the fall, and playing in the marsh. We would follow the fox and raccoon runs, catch minnows in buckets, and dissect owl pellets. We knew where every water hole was located, and we watched the changes in the marsh year after year."



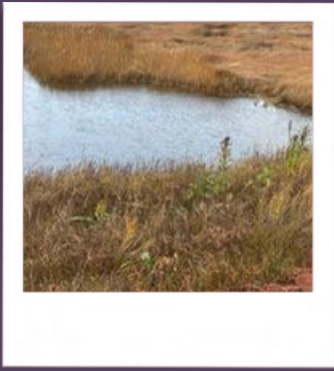
L-R: Donors Tara, Oliver, Bridget, Isaac, William and Elliot Judson at the Judson Salt Marsh Natural Area in Alexandra

A LANDMARK IN ALEXANDRA

Crown Point, located southeast of Stratford, PEI, is a relatively undeveloped coastal headland. It serves as a natural barrier protecting the rural communities of Alexandra and Pownal from the forces of storm surges, winds, and high spring tides. The salt marsh on the property is part of a wider band of coastal salt marsh that stretches along Hillsborough Bay from Stratford to Orwell.

A CULTURAL AND ECOLOGICAL GEM

Crown Point is not only an ecological treasure but also holds significant cultural history for both the Mi'kmaq and the Acadians. The area is believed to contain Mi'kmaq and Acadian burial grounds, along with evidence of Mi'kmaq camps and French battlegrounds.



Diverse Ecosystems

The coastal forest on the Judson Salt Marsh Natural Area boasts mixed wood stands, including white spruce, trembling aspen, white birch, red maple, eastern larch, and American beech. A 3-acre island within Jardine's Bay hosts a similar forest structure, with older hardwoods and established pit and mound topography. The presence of alder swamp along the salt marsh provides habitat for the federally at-risk Canada warbler.

A GIFT TO FUTURE GENERATIONS

The Judson family's decision to donate this ecologically significant land highlights their deep connection to the Island's history and natural heritage. William, eloquently expresses the enduring significance of this land, noting, "This has been a part of my family's life for generations, well before my parents acquired it in the '60s." The Judson family's roots in the area span over two centuries, with stories of the marsh passed down through the generations.

Reflecting on cherished family outings in the 1970s, William recalls, "We had purposeful treks to the woods and the marsh, especially during the fall season." These outings, featuring activities like apple-picking and cranberry gathering, were integral to their family tradition. William vividly recounts a memorable cranberry-picking expedition with his parents and sister, Lisa, when they were 7 and 10 years old. He shares, "Armed with homemade pickers, we traversed a familiar path through the woods, pausing at a clearing for lunch."

Their destination was a captivating marsh fed by a peat bog, boasting tall reeds, marsh grass, duck puddles, and an abundance of cranberries. Despite contending with mosquitoes, the family harvested, explored ponds, raised ducks, and even dissected an owl pellet. William fondly concludes, "By the time we returned home, our potato bag was half-filled with cranberries, and we were soaked, weary, but utterly content." Through this generous donation, the Judson family ensures the preservation of these cherished landscapes for future generations to create their own lasting memories.

Land donations like the one from the Judson family secure the natural heritage of Prince Edward Island for generations to come. While financial contributions are critical for Island Nature Trust to continue its work, donating land is a powerful symbol of commitment to conservation. It's a message that echoes through time, safeguarding the Island's ecological diversity.

We extend our heartfelt gratitude to William, Tara, and their children, Oliver, Isaac, Elliott, and Bridget, as well as to William's parents, Virginia and Donald Judson, and his sister, Lisa Judson (now Lisa Baird), for their exceptionally generous contribution.



Interested in donating your land for Island Nature Trust to protect forever?

Scan to learn more or visit islandnaturetrust.ca/add

Growing a Legacy

THE IMPACT OF

Seed Tree Sponsors

The 'Invest in Nature' initiative by Island Nature Trust is more than a call to action; it's a pledge to safeguard Prince Edward Island's natural landscapes and protect them in perpetuity. In the heart of this conservation effort lies the Seed Tree Sponsorship program, an avenue that allows us to honor and protect the magnificent seed trees of our Island's forests. These venerable trees, often termed the matriarchs of our woodlands, play an indispensable role in the regeneration of our forests, ensuring the continuity of their unique species.



Matthew MacLennan of Charlottetown Toyota (pictured with INT Executive Director, Bianca McGregor)

Charlottetown Toyota **Sponsors a yellow birch Seed Tree in Dunk River Natural Area**

Islanders and Island businesses have heeded this call to protect our forests and have embarked on a transformative journey. Among them is Charlottetown Toyota, a local business that recognizes the pivotal role they can play in preserving our natural heritage.

When asked about what inspired Charlottetown Toyota to sponsor an Island Nature Trust Seed Tree and why this initiative holds special significance for their organization, Matt MacLennan explained, "After witnessing the devastating impact of post-tropical storm Fiona on Prince Edward Island's forests, it was clear that we had to take action. The storm's aftermath galvanized our community to protect our wildlife, and we were deeply moved by the loss of trees and wildlife. Being a local Island business, we felt a strong connection to the cause, especially since the hurricane had the most significant impact on Islanders."

The alignment of Seed Tree Sponsorship with Charlottetown Toyota's values and mission as a local business in Prince Edward Island is evident. Matt stated, "Our family business has a deep connection to wildlife and our commitment to Seed Tree Sponsorship emerged from a desire to make a meaningful impact in the wake of post-tropical storm Fiona, rather than spreading our support too thin. It's a focused and meaningful way to contribute to the recovery effort."



MARIE-ANN BOWDEN:

Sponsors a sugar maple Seed Tree in the Jean & Stewart MacKay Natural Area

Marie-Ann Bowden is a long-term supporter and current board member of Island Nature Trust. Her commitment to conservation is driven by her global travel experiences in highly populated areas, which made her realize the importance of preserving natural areas. She believes that when an opportunity arises to protect and conserve natural spaces, it should be seized to avoid the need for costly reinvention or recovery efforts in the future.

Marie-Ann's support is deeply rooted in her personal connection to the natural beauty of Prince Edward Island and her experiences living out West. The inspiration behind her participation in Seed Tree Sponsorship she says is quite straightforward: "After spending 30 years out West, I found myself yearning for the vibrant red maples and the colorful foliage that I missed during the fall season. These natural wonders were not as prevalent in the Western region where I resided. By sponsoring a Seed Tree and returning home to witness the rich array of colors and the breathtaking shading that our Island's forests offer, it became evident that this endeavor would not only bring me joy but also bring happiness to many other Islanders when they experience the beauty of our forests in the autumn."

In terms of her role in supporting the protection and regeneration of Prince Edward Island's Wabanaki-Acadian forests and broader environment, she emphasizes "that the generous donors provide the land, but it's essential to fulfill the expectations of maintaining, protecting, and enhancing these spaces." Her support contributes to the stewardship initiatives of Island Nature Trust, ensuring that the natural areas are preserved for future generations.

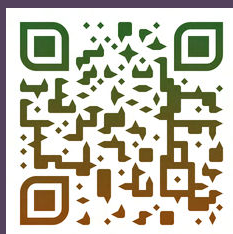


Marie-Ann sees herself as an ambassador for the cause of forest conservation. By making a personal commitment and financial contribution, she hopes to inspire others to do the same, encouraging more people to join the efforts to protect the island's forests.

Looking to the future, Marie-Ann Bowden envisions an optimistic future for Prince Edward Island's native forests as long as the support for land acquisition and stewardship continues to grow. She emphasizes the importance of not wasting time and acting quickly to safeguard these natural spaces for the benefit of the island's natural legacy.

For those interested in sponsoring a seed tree through Island Nature Trust's program, there are various levels of participation available, ranging from \$2,500 to \$7,500 annually. Each level offers a unique opportunity to contribute to the preservation and restoration of our forests, allowing supporters to choose a meaningful species in one of 26 natural areas across the Province.

To learn more about Seed Tree Sponsorship, visit our website islandnaturetrust.ca/seedtree
Or contact our Manager of Philanthropy, Melissa Cameron at development@islandnaturetrust.ca.



Scan to learn more about Seed Tree Sponsorship or visit:

islandnaturetrust.ca/seedtree

SAFEGUARDING THE WABANAKI-ACADIAN FOREST

HELP US REACH OUR
MATCHING CAMPAIGN
GOAL BY MARCH 31, 2024

Click or scan
to triple your
donation
online:



Prince Edward Island, known for its beautiful rolling fields and stunning coastal views, is also home to a unique and invaluable natural treasure - the Wabanaki-Acadian Forest. This intricate network of native forests spans across Kings, Queen, and Prince Counties and plays a crucial role in maintaining the Island's biodiversity. However, these forests are under constant threat from various factors, including development and climate change. To safeguard the Wabanaki-Acadian Forest and protect the Island's ecological diversity, Island Nature Trust is asking Islanders to donate to its matching campaign before March 31st.

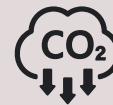
The Significance of the Wabanaki-Acadian Forest



The Wabanaki-Acadian Forest, which covers less than 50% of the entire Island, is a thriving ecosystem that consists of mature forests, wetlands, rivers, and an array of wildlife. This expanse of native forests serves several vital functions:



Biodiversity Hotspot: The Wabanaki-Acadian Forest is a habitat for countless species of birds, plants, and fungi, many of which are rare or at-risk. This biodiversity is essential for maintaining the health of the Island's ecosystems.



Carbon Sink: These native forests act as a significant carbon sink, absorbing carbon dioxide from the atmosphere and helping combat climate change.



Cultural: The Wabanaki-Acadian Forest holds deep cultural significance for Indigenous peoples, serving as a vital repository of traditional practices, spiritual connection, and sustainable living while fostering understanding and appreciation in the broader community.



Water Purification: The forest's wetlands and vegetation help to filter and purify water, making a significant contribution to the Island's water quality.

Threats to the Wabanaki-Acadian Forest

Despite its crucial role in maintaining the island's natural beauty and ecological health, native forests face numerous threats. The most pressing challenges include:



Development Pressure:

Being Canada's most densely populated province with a growing population, the rising demand for land for development on PEI is causing the fragmentation and destruction of native forests and endangering the wildlife that inhabit these woodlands.



Climate Change:

Changing weather patterns and the increased frequency and impact of severe storms pose serious threats to the forest ecosystem.



Invasive Species:

The presence of non-native species threatens the forest's delicate balance and biodiversity.



MATCH A PATCH: PROTECTING PRINCE EDWARD ISLAND'S NATURAL HERITAGE

Island Nature Trust's matching campaign is critical for raising the funds needed to secure and protect the Wabanaki-Acadian Forest. Here's how it works:



Tripling Impact: The matching campaign offers a unique opportunity for donors to have their contributions matched by the Province of PEI and MapleCross fund. This means that every dollar donated becomes three, effectively multiplying the impact of each donation.



Land Acquisition: The funds raised through the campaign will be used to acquire and protect critical parcels of land that contain the Wabanaki-Acadian Forest, ensuring that these natural treasures remain intact and protected.

A CELEBRATION OF PROTECTED FORESTS

Showcasing What Your Support Means



Here, we celebrate the fruits of your support, which perfectly exemplify the type of land Island Nature Trust aims to acquire with the funds raised through this campaign. These protected forests stand as testaments to the positive impact of your generosity and the promise of safeguarding our natural heritage for generations to come.



1. Protected from Development: In Prince County, the 94-acre MapleCross - Nebraska Creek Natural Area connects to an existing INT natural area, and it is situated in an area heavily affected by cottage development. Your support has enabled us to establish a larger, interconnected network of protected areas in a region experiencing significant development pressure. Safeguarding this property guarantees the long-term preservation of the coastal salt marsh and ecologically diverse forest.



2. Nature's Provisions Safeguarded: The 50-acre protected lowland forest, bog, and saltmarsh lying on Baptiste Creek is an extension to the 502-acre Acadian Marshes - Percival River Salt Marsh Natural Area. This large, protected block exemplifies the essential role ecosystems play in mitigating climate change. Your support has ensured the safeguarding of a carbon-sequestering sanctuary, contributing significantly to our collective collaboration with nature in addressing environmental challenges.



3. Cultural Heritage Preserved: In Riverton, located in Kings County, a cherished mixedwood forest and culturally significant forested wetland spanning 75-acres is now protected. The MapleCross - Morell River Riparian Zone Natural Area expands the existing natural area and is graced by the presence of two tributaries of the Morell River flowing through it. Thanks to your support, we have safeguarded the rich riparian biodiversity on the property, including the culturally meaningful Wabanaki-Acadian Forest. The Mi'kmaq name for the Morell River is "Puku'samkek Sipu," which translates to "at the place in the river where there are plenty of clams in the sand."

Donate to **MATCH** A PATCH **TODAY!**

Click or scan
to triple your
donation
online:



These recent acquisition success stories are an embodiment of the positive change that your contribution makes. With your support, we are not only protecting our natural treasures but also fostering a deeper connection to our environment, culture, and the invaluable services these forests provide.

We thank our individual donors, MapleCross fund, The Province of PEI, Wildlife Habitat Canada through the NHCP program, and Environment and Climate Change Canada. Without their help, protecting these lands would not be possible.

Your donation made before March 31st, 2024 will help us protect and steward the Wabanaki-Acadian Forest, ensuring this ecosystem remains an integral part of the Island's identity and ecological health. Donate today and make a real difference in securing Prince Edward Island's natural heritage for future generations to enjoy and appreciate.



"Words can't describe what the Wabanaki -Acadian forest means to me. Rather, I implore you to find a stand of old Hemlock trees, the big ones that you can't quite get your arms around. You'll probably find them by a little bubbling stream. Leave your phone behind, maybe bring a journal. Sit there for a while. Then you will know what it means to you."

Shannon Mader, Species-at-Risk Manager



'IF I COULD HUG AN ISLAND': THE SONG THAT MENDS HEARTS AND HELPS HEAL THE ISLAND

In the aftermath of post-tropical storm Fiona's devastating impact on Prince Edward Island, Island singer-songwriter Noah Malcolm found a powerful way to channel his feelings of grief and helplessness into a beautiful composition. His heartwarming song, 'If I Could Hug an Island,' has resonated deeply with Islanders, offering comfort and warmth during a challenging time.

BE CREATIVE FOR NATURE : MUSIC, ART, AND CONSERVATION UNITE

Creativity knows no bounds, and in this segment, 'Be Creative for Nature,' we explore how imaginative minds like Noah Malcolm's are making a profound difference in the world of conservation. By utilizing their creative talents, artists, musicians, and entrepreneurs are not only crafting beautiful works but also contributing to the protection of nature.

Noah Malcolm's initiative is a remarkable example of how the artistic realm intersects with the conservation world. 'If I Could Hug an Island' stands as a tribute to Prince Edward Island's enduring spirit and a testament to the healing power of art and community support. In this interview, we delve into Noah's inspiration, his hopes for the song, and his commitment to support Island Nature Trust's conservation work through its release.



Q1: CAN YOU TELL US ABOUT THE INSPIRATION BEHIND 'IF I COULD HUG AN ISLAND'?

I wrote the song a few days after Fiona struck. I still remember the overwhelming grief we all felt as the images of the devastation began pouring in—dunes, forests, and the profound loss. Despite feeling helpless, I realized that I have the power to write songs. So, sitting in my apartment, I started crafting this song with a heartfelt desire to convey my love for the Island.

Q2: CAN YOU SHARE YOUR FIONA EXPERIENCE?

My experience during Fiona wasn't as severe as many others. I live downtown, so I had power back relatively quickly. But my family in St. Peters didn't have power for nearly two weeks. A vivid memory is me walking in the pitch-black Charlottetown trying to find my friend at 1 a.m. with just a BBQ lighter because my phone had died. It wasn't as bad for me, but I deeply felt the island's pain.

Q3: WHEN YOU PERFORMED THE SONG AT THE FESTIVAL OF SMALL HALLS, THE AUDIENCE'S RESPONSE WAS REMARKABLE. CAN YOU DESCRIBE HOW IT FELT TO SEE PEOPLE CONNECT WITH YOUR SONG?

It was a transformative experience when, for the first time, I taught the lyrics to the audience. I had envisioned it as a song that people could sing with me, and it became a reality. Four hundred people sang along that night at Zion, and it was an unforgettable moment. The overwhelming response inspired me to record the song.

Q4: WHAT DO YOU HOPE PEOPLE TAKE AWAY FROM 'IF I COULD HUG AN ISLAND'?

I hope the song provides comfort and connection to the Island and its people, especially those who experienced Fiona. Ideally, it becomes part of the island's cultural fabric, resonating with Islanders for years to come. I want people to feel something when they hear it, a connection to the island and its enduring spirit.



Q5: YOU'VE CHOSEN TO USE THE SONG'S RELEASE TO RAISE FUNDS FOR ISLAND NATURE TRUST. CAN YOU TELL US MORE ABOUT THAT INITIATIVE?

The song was released on the one-year anniversary of Fiona, and all proceeds from its downloads are directed to INT who have been doing incredible work post-Fiona. I think as individuals, it's easy to feel like we can't take up space or enact change. But we see time and time again, in every global issue, that when people come together as a collective, there's power in numbers. No donation or action is too small. And when it comes to the environment, we are dealing with finite resources. It's in everyone's best interest to help protect and conserve what we have.

You can download the song from my Bandcamp page, and it's a 'pay what you can' model. If you wish to contribute more than the song's base price, it becomes a donation to Island Nature Trust.

Q6: AS A CREATIVE ARTIST, HOW DO YOU VIEW THE ROLE OF ART AND CREATIVITY IN RAISING AWARENESS AND SUPPORT FOR ENVIRONMENTAL CAUSES LIKE ISLAND NATURE TRUST'S MISSION?

I believe people connect to things more when it's presented in an artistic way. I think if an artist has an opportunity to make even a small difference through their art, they should try and do so. I saw the response to my song on social media and received so many messages about the emotional impact it was making, so I wanted to see if that emotion could be directed to tangible action.

Noah Malcolm's emotional song 'If I Could Hug an Island' has offering solace to the island and its people during a challenging time. The song stands as a tribute to Prince Edward Island's enduring spirit and a testament to the healing power of art and community support.

Buy a digital track of Noah's song for \$2 with all proceeds going to Island Nature Trust to carry out vital stewardship in our protected natural areas across the Island.



Click or scan to purchase the song



Listen to Noah's interview with CBC



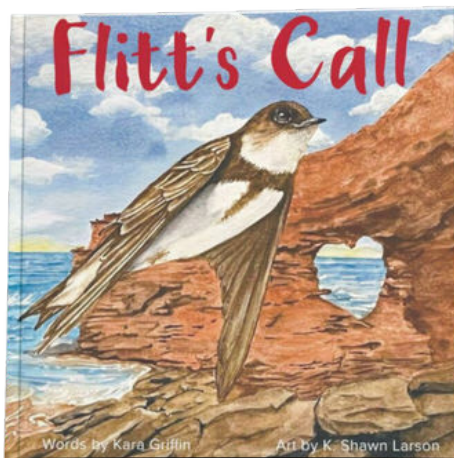
Flitt's Call: A Tale of Resilience and Connection to Nature



L to R: Kayle Laverty (INT Engagement Coordinator), Kara Griffin (Flitt's Call Author) and Shannon Mader, Species-at-Risk Manager

Island Nature Trust (INT) is excited to announce that bookstores are graced with the fluttering pages of "Flitt's Call," a captivating children's book that weaves a tale of resilience, togetherness, and a plea for our planet's well-being. Authored by Kara Griffin and brought to life by local artist Shawn Larson, the book is ready to soar into the hearts of readers, delivering a poignant message in a time of environmental challenges.

INT staff collaborated with Kara and Shawn to ensure the distribution of a picture book and Activity Guide - published by Acorn Press - to all grade two students in the Public Schools Branch in 2023/24.



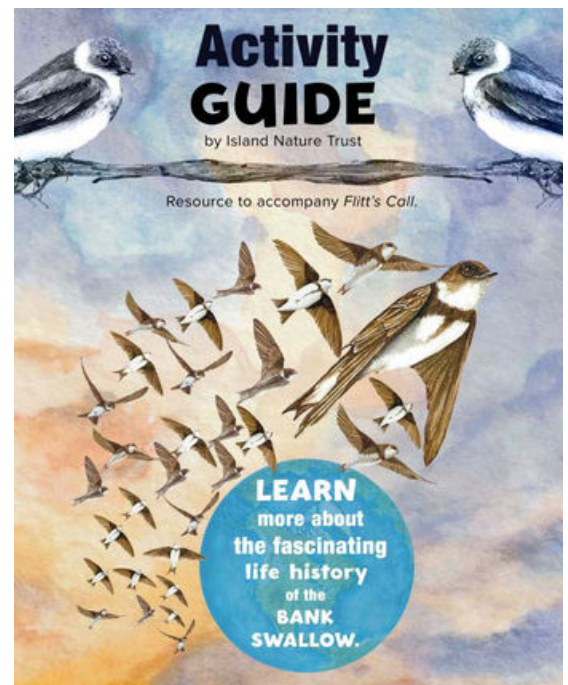
**Click or
scan to
Order
Flitt's Call**



L to R: Shawn Larson (Flitt's Call Illustrator Artist), Kara Griffin (Flitt's Call author) and Shannon Mader, Species-at-Risk Manager

This collaboration between Island Nature Trust Griffin, and Larson holds a deeper purpose. Through the enchanting story of Flitt, a bank swallow facing the changing landscapes of PEI, the book serves as an eco-literacy beacon. It aims to foster a profound connection to nature among young Islanders and fortify their spirits amidst ongoing climate change and biodiversity loss. INT, through this and other programs, aspires for the messages imparted to resonate throughout individuals' lives. If you don't love it, you won't protect it. It is through a deep connection to nature that conservation begins.

"The story of Flitt reflects the interconnectedness we all share with nature. It's a call to our hearts and a reminder that our actions reverberate through the entire ecosystem," says author Kara Griffin, sharing her inspiration behind the book.



Click or scan
to Order the
Activity Guide



Environment and
Climate Change Canada
Environnement et
Changement climatique Canada



**PEI Alliance for
Mental Well-Being**
Advancing resiliency



Flitt's Call Sneak Peek event at Wood Islands Provincial Park

The narrative follows Flitt, a steadfast bank swallow returning annually to the island's cliffs. But this year, confronting alterations in his habitat, fewer companions, and a diminishing insect supply, Flitt realizes the urgency to teach a special call. "Flitt's Call" becomes not just a bird's song but a prayer, a plea for the planet, and a reminder of our profound interrelationship with nature.

"I've always loved nature, and this book is an extension of that love. I hope it inspires people to fall in love with the natural world and, from that place of love, be moved to protect it," Griffin emphasizes.

The book's launch will take place at the Haviland Club on November 25th at 10am as a celebration of this remarkable collaboration. Attendees will be treated to a reading by Kara Griffin, who will share the heartfelt inspiration behind her work. The event also marks the culmination of concerted efforts, including funding support from PEI Alliance for Mental Well-Being and Environment and Climate Change Canada.

"In crafting 'Flitt's Call,' I aimed to seamlessly blend scientific facts into a heartfelt story. It's been a unique and complex creative process, delving into the world of bank swallows and learning more about them with each step," Griffin reveals, highlighting the depth of research and dedication poured into the book's creation.



A bank swallow entering its burrow at Wood Islands. Photograph submitted by Rodney Payne

Griffin envisions "Flitt's Call" as more than a story—it's a call to hearts, a love letter to nature. She believes in the transformative power of storytelling, especially in connecting with younger audiences. "Stories can change the world. Stories can heal the world," she passionately states, echoing her admiration for Jane Goodall's approach to engaging hearts through stories.

The book's message echoes a plea for conservation, urging readers to protect the natural world. Griffin's pledge of author royalties to INT for the next five years reflects her commitment to safeguarding the environment, demonstrating that art and action intertwine to create meaningful change.

"Flitt's Call" stands as a testament to the collective efforts of passionate minds weaving art, narrative, and conservation into a tapestry of hope. As the pages of this enchanting tale turn, they echo the resilient spirit of a little bird calling for us to protect our shared home—our planet.

This project would not have been possible without the funding support of PEI Alliance for Mental Well-Being and Environment and Climate Change Canada.

Both books can be purchased through Nimbus, Bookmark PEI or Indigo/Coles.

Are you interested in being creative for nature to raise money for Island conservation?

Contact Melissa Cameron, our Manager of Philanthropy at development@islandnaturetrust.ca or call (902) 892-7513



Bridging the gap with

PRIVATE STEWARDSHIP: PROTECTION OPTIONS FOR LANDOWNERS

While many may not have the opportunity to witness the seamless interplay between nature and human existence or comprehend the remarkable ecosystems thriving in natural areas, there are a significant number of individuals who share a profound connection with the natural world, within their own backyards. Island Nature Trust invites individuals who cherish the Island's ecological treasures to play an integral role in preserving our natural environment.

For those who are eager to make a difference in the realm of land conservation and own land, private protection is a unique path to explore.

This project was undertaken with the financial support of:
Ce projet a été réalisé avec l'appui financier de :



Environment and
Climate Change Canada

Environnement et
Changement climatique Canada



Private Protection

A BEACON OF HOPE

Prince Edward Island is known for its natural beauty, yet much of the landscape has witnessed the impacts of human activities, from forestry and agriculture to development where approximately 87% of its land is privately owned. INT recognizes the importance of collaborating with like-minded individuals who share a common goal: to safeguard as much of the Island's remaining natural areas as possible. This endeavor is driven by a deep commitment to nurturing the Island's ecological integrity for the benefit of both humans and wildlife, now and in the future.

For landowners who hold the ecological integrity of their property in high regard, private protection offers a unique opportunity to promote the perpetual naturalization of their land. The process of protecting land varies according to individual values and goals, and at INT, we are able to assist landowners with conservation of ecosystems and the promotion of naturalization through the PEI Natural Areas Protection Act (NAPA).

Under NAPA, a restrictive covenant serves as the guardian of the designated natural area, shielding it from development and regulating permissible activities. The strength of this protection lies in its permanence; once a natural area is designated under NAPA, the restrictive covenant cannot be removed by the landowner. This ensures that the property is preserved as a natural area for both present and future generations.



CONSIDERATIONS ON THE PATH OF PROTECTION

When considering land protection through NAPA, it's important to weigh the benefits and responsibilities. Some of the notable advantages include:



Permanent Protection:

Land designated under NAPA is safeguarded in perpetuity, ensuring its ecological integrity is preserved for the long term. The landowner cannot remove the designation, and the protection runs with the property - so all future landowners will be subject to NAPA restrictions.



Support for Biodiversity:

Protected areas under NAPA promote and maintain biodiversity, allowing native species to thrive and contributing to a healthy ecosystem.




Relief from Property Tax:

Land designated under NAPA is exempt from property taxes, offering financial relief to landowners.

The landowner has the flexibility to designate the entire property or only a portion. For landowners residing on their property, they can exclude their home, yard, and buildings from the designation. However, due to the permanent nature of this protection mechanism, it's crucial to make an informed decision, understanding that, while you can sell a protected property in the future, its fair market value may be reduced due to the loss of development rights on the protected portion.

For those interested in exploring the avenue of formal protection through NAPA, INT is ready to provide additional information and guide you through the process, ensuring that your land's protection aligns with your values and vision.



EXPLORING ALTERNATIVES TO NAPA PROTECTION

While formal protection through NAPA offers robust safeguards for your land, INT recognizes that it may not align with everyone's goals or time constraints. For those with forested land that has been significantly impacted who wish to witness its naturalization, allowing nature to take its course without formal protection is a meaningful option. Consulting with organizations such as Macphail Woods to design a Forest Management Plan is another route. By registering for the Province of PEI's Forest Enhancement Program, you can access financial support to create and implement a plan focused on sustainable forestry practices, helping your forested land to thrive and maintain its ecological value.

There are many other avenues for positive land stewardship without formal NAPA protection. For example:

- Embracing ecological silvicultural practices to reintroduce native species that characterizes the Island's natural landscape.
- Removing invasive species from your land, creating space for native flora and fauna to flourish.
- Planting native trees and shrubs to enhance the ecological value of your property.
- Leaving snags (dead trees) in place to provide essential habitat for wildlife.

The path to

CONSERVATION AWAITS



Your journey in land stewardship is a personal one. While formal protection through NAPA offers substantial safeguards, it has economic impacts and it's equally important to explore alternative approaches that align with your values and vision for your land. Whether you choose private protection through NAPA or opt for hands-off land stewardship, your commitment to preserving Prince Edward Island's natural beauty is invaluable. INT can help you with whatever path you choose!

As we look forward to the next magazine issue in February 2024, we invite you to explore our 'Be a Guardian for Nature' supporter segment, where we will delve into the myriad ways to actively support INT's mission through hands-on conservation, volunteering, and participation in events. By becoming a guardian for nature through hands-on land stewardship, you will become a vital part of the effort to preserve Prince Edward Island's unique ecosystems.

In addition, we will showcase individuals and their personal stories of private protection, highlighting their dedication to preserving the Island's natural treasures and sharing their inspirational journeys. Together, we'll continue to protect and celebrate the beauty and ecological significance of Prince Edward Island for generations to come.

**For more information, contact Cassandra Stoddart
our Private Stewardship Coordinator at cstoddart@islandnaturetrust.ca
or call (902) 892-7513.**

STAFF PROFILE

Kelly Rivera, Digital Content Specialist

As an international student pursuing her Master of Arts in Island Studies, her journey in Prince Edward Island has been nothing short of transformative.

As the Digital Content Specialist at Island Nature Trust, it has been a truly enriching experience. The organization's commitment to preserving the island's natural beauty aligns perfectly with her personal values, and she is grateful for the flexibility it provides, enabling her to give back to the community in diverse ways.

In addition to her work with Island Nature Trust, Kelly actively volunteers at several local organizations, each contributing to the rich tapestry of community life on the island.



Kelly's journey as an international student turned community contributor has been shaped by the kind spirit of Prince Edward Island and the opportunities that Island Nature Trust has provided. As she continues my studies and work with the Trust, she remains inspired by the island's natural beauty and its vibrant, compassionate community. Together, we are fostering a stronger bond between people and nature, reminding us all that even as international students, we can find our place and make a lasting impact in the heart of the island.

Kelly can be reached at;
content@islandnaturetrust.ca

Contact Us:

112 Longworth Avenue
PO Box 265 Charlottetown,
PE C1A 5A8
Phone: 902-892-7513
E-mail:
admin@islandnaturetrust.ca

Find Us Online: www.islandnaturetrust.ca



[linkedin.com/company/island-nature-trust](https://www.linkedin.com/company/island-nature-trust)



[facebook.com/islandnaturetrust](https://www.facebook.com/islandnaturetrust)



[instagram.com/islandnaturetrust](https://www.instagram.com/islandnaturetrust)

Send us a
message



INVEST IN NATURE

Invest in Nature is a pathway to support Island Nature Trust for those who are passionate about protecting the natural beauty of Prince Edward Island and securing a sustainable future through financial contributions and land donations. Discover the direct and immediate ways you can invest in the island's ecological health and support the mission of Island Nature Trust.

WHAT DOES IT MEAN TO INVEST IN NATURE?

Being an investor in nature means directly contributing to the protection and conservation of Prince Edward Island's natural landscapes. Your support not only strengthens the roots of our conservation efforts but also ensures the long-term sustainability of our island's biodiversity.

**Want to chat about
investing in nature?**

**Contact our Manager of
Philanthropy, Melissa Cameron at
development@islandnaturetrust.ca
to or call (902) 892-7513.**



SCAN
OR
CLICK



FINANCIAL CONTRIBUTIONS AND 'MATCH A PATCH' CAMPAIGN

Cash contributions are the lifeblood for Island Nature Trust's work, acquiring natural land for protection, stewarding ecosystems, and promoting education. Amplify your impact with the 'Match A Patch' campaign, where generous donors triple the value of your support.

Scan or click to learn how your financial support can help sustain the Wabanaki-Acadian forests in PEI.



LAND DONATIONS: PERPETUAL PROTECTION

Consider donating your ecologically significant land to Island Nature Trust. This act goes beyond mere charity; it becomes a lasting legacy for nature conservation.

By gifting your land, you ensure that it remains undeveloped and protected forever.



SEED TREE SPONSORSHIP: CULTIVATING BIODIVERSITY

The Seed Tree Initiative offers a unique way to contribute to land stewardship and conservation. By sponsoring a seed tree, individuals or businesses actively participate in the restoration and well-being of our island's ecosystems.



LEGACY GIVING: ENSURING A LASTING IMPACT

Legacy giving is a pathway to provide enduring support for Island Nature Trust's mission. By including the Trust in your will or estate plan, you create a legacy of nature conservation. Your commitment will benefit the environment and the island's biodiversity for years to come.