



ISLAND
NATURE
TRUST

OCTOBER 2021
#153

*Dedicated to the protection of
Natural Areas in Prince Edward
Island since 1979*

In this issue:

- 2-3 Add, Mend or Match A Patch:
INT is appealing to Islanders to help fix PEI's
fragmented landscape with the launch of
the SAVING our isLAND campaign.
- 4-5 New Lands:
First of its kind donation sees American
family donate land to INT in Cable Head
- 6-7 Farmland Birds Program
- 8 Philip Michael: In Memoriam
- 9-11 AGM: Board Members Outgoing/Incoming
- 12 A Summer Back On PEI:
By Brittany MacLean
- 13 Copper Bottom Brewing: Give back Initiative
- 14 Young Naturalists
- 15 News

Saving
our isLand



2020-2021 Impact Report
**Available to
download today!**

Quarterly



INT

SAVING OUR ISLAND:

*Add, mend or match a patch
to make a difference*



Broken Landscape

Our Island home is fragmented. A birds-eye view of PEI reveals a land resembling a patchwork quilt. From the sky, we bear witness to a scarred landscape harbouring wildlife that is suffering greatly.

Nature Provides

Island Nature Trust recognizes just how dependent all of us are on nature to shield our communities from the oncoming effects of climate change. By acquiring natural land, we can heal, reconnect, and protect these spaces for the benefit of Islanders and wildlife, forever!

The Impact of Islanders

Now, every single Islander has the chance to help mend this province, patch by patch.

We are appealing to you to donate land or cash to the SAVING our isLAND campaign. As a community we can collectively help to reach the goal of protecting 10% of the province for future generations of Islanders and wildlife to enjoy and be the first province in Canada to reach Net Zero.



HOW YOU CAN HELP

Firstly, if you have ecologically important land, **add a patch** by donating it to the Trust and we will protect it forever. To protect in perpetuity, we need resources on the ground - donate to **mend a patch** to bolster conservation efforts in our natural areas. Finally, to connect existing protected parcels of land to new ones, donate to the **match a patch** campaign and the province, along with our partners in conservation, will help to effectively triple your contribution.



Donate your ecologically important land for Island Nature Trust to protect in perpetuity.



Donate cash to help us acquire 10% of PEI natural areas and your contribution will be tripled.



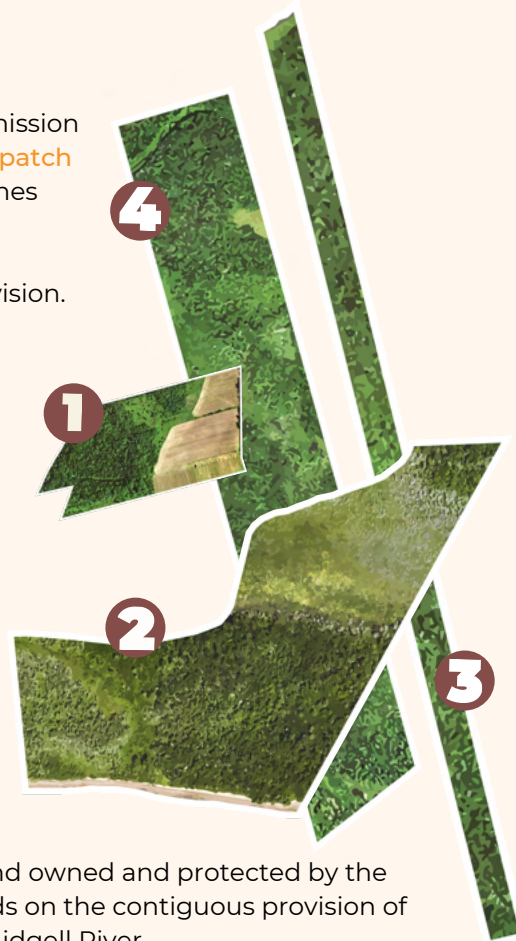
Donate cash to the stewardship fund to ensure the long-term integrity of our natural areas.

Corridors of Connectivity

We often use the term 'corridors of connectivity' as a metaphor to explain our mission of securing a network of interconnected natural areas on PEI. And the **match a patch** campaign will enable us to strategically weave back together fragmented patches and restore a protected network of ecological diversity.

The adjacent target acquisitions are exemplars of our corridors of connectivity vision.

1. **Bangor, Kings County:** The Morell River Conservation Zone protects 44 kilometers of river in eastern PEI. This is a region of biodiversity known as a riparian zone, which provides critical habitat for many types of wildlife and complex ecosystems. This parcel is a small but pivotal expansion to the protected riparian area surrounding it.
2. **Alexandra, Queens County:** Located close to the urban hubs of Charlottetown and Stratford, this ecological treasure was threatened by population growth and development before Island Nature Trust acquired Crown Point in early 2020. We now have adjacent parcels in our sights and a corridor of connectivity could be realised in the acquisition and protection of the broader span of continuous saltmarsh along Pownal Bay.
3. **Miscouche, Prince County:** The riparian ecosystems along Grand river are providing many services to Islanders in the form of flood protection, fresh water, climate regulation and carbon storage. The parcel connects to an existing INT natural area.
4. **Corraville, Kings County:** Surrounding INT's MacKinnon's Bog Natural Area is land owned and protected by the provincial government and Ducks Unlimited. The Elm Road opportunity expands on the contiguous provision of wildlife habitat in the headwaters of the ecologically and culturally significant Midgell River. Elm Road consists of riparian forests and wetlands of high ecological value, supporting rich networks of biodiversity. These ecosystems are key breeding areas for many migratory songbirds and bats. The contiguous forest and wetlands are significant carbon sinks and a natural remedy against the ongoing effects of climate change.



LEARN MORE & DONATE:
ISLANDNATURETRUST.CA/PATCHWORK



NEW LANDS:

Cable Head

Eppig-Flower Natural Area



A game-changing cross-border partnership between INT and American Friends of Canadian Conservation – launched to help American landowners donate their land for conservation purposes – is celebrating its first win.

American ownership is approximately 3.5% of the total land on PEI, yet for many years, American landowners interested in donating land for conservation purposes have experienced disproportionate legal and financial barriers. However, thanks to INT and American Friends initiative forged in 2018, significant tax relief is now secured for American donors.

It was PEI's reputation for swimmable ocean water that first drew Molly and Peter Eppig north from New England in 1993. They rented a house in Cable Head for their family vacation and ten years later purchased a property in the same community where they eventually built a home in the style of a traditional Island farmhouse.

"In 2018 we attended an information session hosted by Island Nature Trust and American Friends of Canadian Conservation where we learned that it's possible for American owners of Canadian property to donate ecologically sensitive land as well as realize tax benefits in the US," said the Eppigs.

"We decided to protect a wooded portion of our property that includes a bog which has



been identified as ecologically important. We were so pleased to collaborate with American Friends and Island Nature Trust to ensure conservation of this property in perpetuity and we certainly encourage other American owners of PEI property to consider the American Friends of Canadian Conservation organization to see if there is a fit for their long-term plans."

Prince Edward Island has long enjoyed a strong bond with northeastern regions of the United States. Historically, many families had members traveling back and forth to Boston or elsewhere on the U.S eastern seaboard for work. Those family ties often remain, with cousins, grandparents, or other relations on both sides of the border with many acquiring land or settling in PEI for the long-term.

"Americans who love PEI landscapes can now contribute to conservation and receive the same tax recognition that Canadians do. This fantastic cross-border partnership, applied in several other provinces already, allows us to more fully honour this gift of conservation land."

Megan Harris, Director of Conservation



The Eppig – Flower Natural Area, a 25-acre parcel located in Cable Head East was generously donated by American's, Peter and Mary Eppig and contains carbon storing peatland-type wetland and forest, both habitats for a myriad of wildlife. The parcel is contiguous with a 495-acre woodland and wetland complex in the area, which contains Island Nature Trust's Perret – McKinnon Natural Area – providing excellent connectivity to an existing protected space. The diverse ecosystems and services the natural area provides will be protected forever for the benefit of both Islanders and wildlife under the Natural Areas Protection Act.

American Friends' charitable status recognition in both the US and Canada makes these donations financially attractive for generous US taxpayers. It is a US publicly supported 501(c) (3) charitable organization, meaning all types of charitable gifts are tax deductible in the

US. In addition, gifts of land and conservation easements are effectively not subject to Canadian capital gains tax. Island Nature Trust will steward donated properties through the partnership after they have been protected, concluding with transfer of ownership from American Friends to repatriate the title.

"It is inspiring and rewarding to collaborate with the Island Nature Trust and with US landowners like the Eppigs who are committed to preserving a Canadian place they love. Everyone at American Friends is so pleased with the partnership on PEI and looks forward to having a significant impact on conservation in the Province."

Sandra Tassel, Program Coordinator for American Friends

Pictures (top bottom): Megan Harris peers into the old growth forest, trembling aspen leaves followed by an upward shot of the tree, black spruce, and blue flag iris.

INTERESTED IN DONATING OR SELLING LAND?

You have many options and the result is of great benefit to both you and the wildlife you could help to protect. Learn more at; islandnaturetrust.ca/conserving-land

Let's have a chat! Contact our Director of Conservation, Megan Harris at; conserve@islandnaturetrust.ca or call 902-566-9150



FARMLAND BIRDS PROGRAM

Working Together with Agriculture and Species at Risk
By Farmland Birds Coordinator, Sandra LeClair

In 2014 Island Nature Trust started the **Farmland Birds Program** which initially focused on communication with landowners to raise awareness about Bobolink and Barn Swallow and the threats they face. This was done by visiting properties of landowners who were interested in helping and learning about how to protect these species at risk.

To understand the best way to help these two species, we first have to learn more about them.

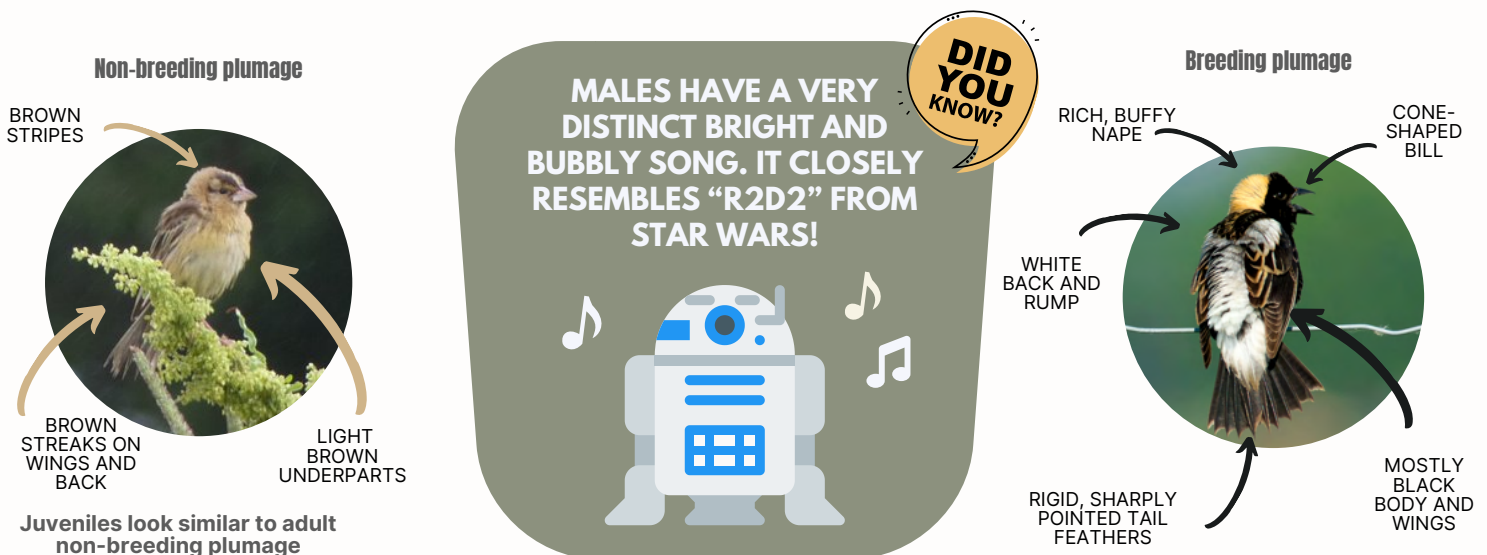
Bobolink

Bobolink populations have declined by 88% in Canada over the last 40 years. The main reason for this decline is the changing of farming practices. Timing for harvesting hayfields (the primary nesting habitat of Bobolink) has moved ahead by nearly 1-2 months in the last 20 years. Unfortunately, this moves the

harvest timeframe directly in line with the Bobolink breeding season, which impacts the rate of survival of new Bobolink young.

Bobolink nest almost exclusively in hay fields, arriving in middle to late May. Females build their nests on the ground, usually well hidden in amongst the vegetation. Females lay four-six eggs and incubate them for two weeks until the chicks hatch. Chicks are helpless upon hatching and must remain in the nest for another two weeks before they are able to sustain short bursts of flight. Once the chicks are capable of these short flights, they can move out of the way of oncoming machinery.

To help conserve Bobolink, the Farmland Birds Program has collaborated with the Alternative Land Use Services (ALUS) and has identified a delayed-haying cut date of July 15th. Farmers can sign up with ALUS to receive a monetary incentive to delay their hayfields until this date. If you are interested, please contact landbirds@islandnaturetrust.ca.



HOW CAN YOU HELP?

**DELAY CUTTING
HAYFIELDS
UNTIL AFTER
JULY 15**

**RAISE CUTTING
HEIGHT OF
MOWER**

**PLANT LATE
MATURING
FORAGE
CULTIVARS**

**PLANT
MARGINAL
AREAS OF FIELD
IN GRASS**

**REPORT
BOBOLINK
SIGHTINGS TO
INT**

Barn Swallow

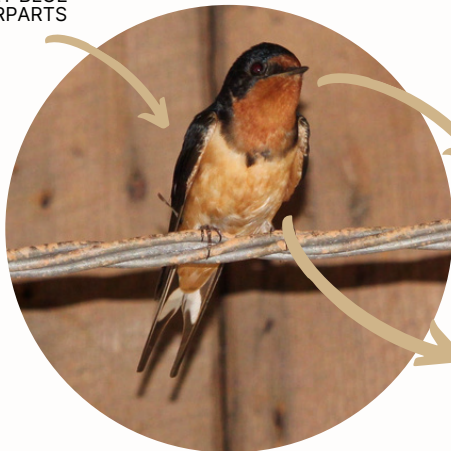
Barn Swallows nest exclusively on man-made structures such as barns and bridges. Unlike the Tree Swallow, which they are often mistaken for, Barn Swallows build their nests out of mud which the birds roll into pellets and attach to walls, close to the ceiling. Tree Swallows nest exclusively in cavities such as nest boxes or tree hollows.

Although the Barn Swallow is one of the most widespread landbird species, their population has experienced a significant decline. As wooden barns are being replaced with newer metal ones, Barn Swallows are losing important nesting sites, as they use the same nests for multiple years. The newer metal-roofed buildings have also been proven to leave chicks vulnerable to heat-induced mortality.

As well as losing their nesting sites, the loss of agricultural lands results in the loss of foraging grounds.



STEELY BLUE
UPPERPARTS



DARK
CHESTNUT-
COLOURED
FOREHEAD AND
THROAT

LIGHT RUFOUS
UNDERPARTS

HOW YOU CAN HELP

- Report any sightings of barn swallow to Island Nature Trust using any of the contact information provided below!
- Open doors or windows of suitable buildings to allow Barn Swallows access to nesting ledges from May to August.
- Installing a simple 2" x 4" ledge where there is none, ideally places within 12" of horizontal cover (I.E. a ceiling) and out of reach of cats and raccoons.
- Do not remove swallow nests after breeding season as they often re-use nests from the previous year.
- Avoid the use of insecticides whenever possible.

FARMLAND BIRDS PROGRAM 2021 RESULTS

By 2017, 49 landowners were leaving barn doors open on 126 buildings across PEI and 38 land owners were delaying hay on 653 acres. We've built on this success and in 2021 10 barns were directly monitored for Barn Swallows, with a total of 56 active nests resulting in 109 Barn Swallow fledglings!

Also in 2021, 1360 acres of hayfields were delayed between the ALUS incentive program and INT's Farmland Bird Program volunteers, 17 of which were directly monitored for Bobolinks. All 17 fields had Bobolink nesting in them, resulting in 92 observed fledglings with a total estimate of 137 successful fledglings!

If you, or someone you know is interested in learning more about Barn Swallows or Bobolink, and how you can help conserve these two amazing species, please do not hesitate to contact INT.

The Farmland Birds Citizen Science Project is another way you can get involved. Recording your observation of these species comings and goings throughout the summer months is extremely important. INT would not know as much as we do about these birds and their local populations without your continued help and support.

BARN SWALLOW	
When did you observe:	Date:
First Barn Swallow of the season?	
First flying insects?	
Nesting materials being gathered by swallows?	
First sign of young? (e.g. adults feeding at nest, carrying food or discarding egg shells)	
First time you see young/fledglings and the number?	
First sign of 2nd nesting attempt? (indicate if there was none)	
Last sighting of the season?	

ISLAND NATURE TRUST
Thank you for helping to conserve Farmland Birds. Please report your observations to landbirds@islandnaturetrust.ca

BOBOLINK	
When did you observe:	Date:
First Bobolink of the season? (male/female)	
First time you hear a male calling?	
Nesting materials being gathered or carried?	
First sign of young? (e.g. adults carrying food)	
First time you see young/fledglings and the number?	
Last sighting of the season?	

ISLAND NATURE TRUST
Thank you for helping to conserve Farmland Birds. Please report your observations to landbirds@islandnaturetrust.ca

**ARE THERE BOBOLINK
OR BARN SWALLOWS
NEAR YOU?**

Learn more by contacting Farmland Birds Coordinator,
Saundra LeClair at landbirds@islandnaturetrust.ca or call
902-566-9150

"I hope Phil's legacy for caring about nature lives on through the Island Nature Trust." - Aileen Cameron

"Philip was my friend from childhood, one of a number of children that lived on our street that we all played together." - Mary Stedman Johnson

"Dear Cordis, Lindsay, Brittany, and family:
My condolences on the passing of Phil. I have very fond memories of working under his supervision and mentorship when I was an interpreter at Prince Edward Island National Park." - Donna Gill

"In memory of a true nature lover and conservationist" - Paula Ling

"In memory of my wonderful brother, Philip." - Wendy Michael



IN MEMORY OF PHILIP MICHAEL 1950-2021



Philip Michael, was an ardent supporter of island conservation with a 'boundless energy, focus and curiosity that made him a master of gardening, bird and plant identification.'

The Trust warmly thanks the following people who donated to INT in memory of Philip:

Anonymous	Doug Wright
Aileen Cameron	Edward Crockett
Allan Stedman	Glenda Szepecht
Anne Love	Harold Saint
Barb MacDonald	Island Coastal Services Ltd.
Brenda Michael	Sharon & Lothar Zimmermann
Colleen Pidgeon	Maritime Electric
David Pantou	Mary Stedman Johnson
Diana Love	Nancy Lawton
Donald Patton	Paul & Jane Michael
Donna Gill	Paula Ling
	Susan Willis
	Treva Reeves
	Wendy Michael

"Dear Cordis and girls, We are so shocked and saddened to hear about Phil's sudden death. He passed on our anniversary and we decided to celebrate today. Please accept our sincere sympathy and know you are in our thoughts and prayers.

He will be greatly missed not only by you his family, but by neighbors and the community. God bless Cordis."

Sharon & Lothar Zimmermann

ANNUAL GENERAL MEETING

This years' Island Nature Trust annual general meeting was held at the Florence Simmons Hall in Charlottetown on September 22nd, with 19 voting members in attendance.

The 2021 Hon. J. Angus MacLean Natural Areas Award, was awarded to Dr. John and Christine Andrew of Charlottetown.

The Andrews are recognized for their contribution to Island conservation by restoring a pond located in East Royalty and creating a space where "...residents could enjoy nature and wildlife could thrive. The Pond has a long history that dates back to the 1790s when it was built as a millpond by early Island industrialist John Cambridge. In addition to providing power for the mills, the pond supplied Charlottetown with most of its ice."

Dr. Andrew is a retired medical physicist having worked at the PEI Cancer Treatment Centre, the Nova Scotia Cancer Centre and Dalhousie University.

OUTGOING BOARD MEMBERS:

Thank you for your support!



Rob MacKay



Kevin Teather



Mary Acorn



Tyler Coady



Stephane Le Blanc



**2020-21
IMPACT
REPORT**
**OUR YEAR
IN REVIEW**

*Download
today!*

INCOMING BOARD MEMBERS:

Kim Horreлт received her Certificate of Applied Science from Acadia University and went on to complete her degree in Civil Engineering at the Technical University of Nova Scotia. She continued her education and received her master's in business administration from Saint Mary's University. She has over 20 years experience in the private sector construction and consulting industry.

As part of the senior management team of M.F. Schurman Co. Ltd. – once a recognized leader in building supplies, concrete and commercial, industrial, and institutional construction projects on PEI – Ms. Horreлт managed numerous major projects on Prince Edward Island, from design through to completion.

Ms. Horreлт has also held roles as Program Manager of Technology and Media programs at Holland College, and as Director of Infrastructure with the PEI Department of Transportation and Infrastructure Renewal. 2013 to 2015 she took a secondment at the University of Prince Edward Island as Executive Director of Government and Community Relations and played a key role the development of the new School of Sustainable Design Engineering. Ms. Horreлт's latest role was as the CEO of the Prince Edward Island Energy Corporation and the Director of Energy & Minerals division in the Department of Transportation, Infrastructure and Energy. In recent years, Ms. Horreлт was Chair of the Board for Habitat for Humanity PEI and a member of the Board of the IWK Hospital. She is a past board member of the Charlottetown Airport Authority and a past board member of Maritime Electric. Presently she is Chair of the board of Atlantic Aqua Farms.

Ms. Horreлт lives in Stratford, PEI with her husband John and they have three grown children, Ross, Lisa, and Jamie.



Kim Horreлт



George W. Mason

George W. Mason's early education was as a Forester at Lakehead University where he majored in Resource and Wildlife Management. While he shifted towards business at Queens University and became a Professional Accountant, he has continued his interest in conservation with several of his own forest properties. He and his wife Maureen are retired and split their year between Charlottetown and Launching with their Australian Shepard Molly.

George moved to P.E.I. in 1983 as a lecturer at U.P.E.I. and consultant with a small firm – Island Energy Associates – which specialized in alternative energy projects. After working several years in the private sector, he spent twenty-seven years in various senior management positions with the Province in Energy and Forestry, IRAC, Health, Provincial Treasury, and Justice and Public Safety/Communities, Land and Environment.



George has held several volunteer positions over the years including the Canadian Wildlife Federation, World Wildlife Fund, Trans Canada Trail, and the Canada Winter/Summer Games. Board Positions included Theatre P.E.I., The P.E.I. Council of the Arts, C.H.A.N.C.E.S, CNIB PEI, Professional Accounting organizations and Island Nature Trust (briefly until becoming a director at Environment).

George, Maureen, and Molly particularly enjoy their cottage, boating/kayaking, and hiking throughout P.E.I. Molly is less cooperative with cycling, skiing, and snowshoeing. George also purchased a used ambulance in 2016 which he converted to a camper for exploring Atlantic Canada and Quebec.



Andrea McManus



Andrea McManus is a Co-founder and Senior Counsel with ViTreo Group, a Western Canada- based consultancy that specializes in working with charities and non-profit organizations.

With over 35 years' experience in fund development, marketing, sponsorship and non-profit management, Andrea has worked with organizations that span the non-profit sector with particular focus on building long-term and sustainable capacity that is firmly anchored in a philanthropic literacy and strong governance through all levels of the organization.

Andrea has made many contributions to building a stronger and more professional sector both locally, nationally, and internationally. She was the first person outside of the United States to hold the position of Chair of the International Board (2011-12) of the Association of Fundraising Professionals; and was the founding chair of the Calgary Chamber of Voluntary Organizations. She has sat on numerous local and national initiatives to strengthen the Canadian non-profit sector including the Imagine Canada Ethical Code Advisory Committee, Canada Revenue Agency's Charities Technical Issues Working Group, and Imagine Canada's Personal Philanthropy Project. In 2019 she was appointed to the Advisory Committee on the Charitable Sector a cross-Canada committee that provides advice to the Minister of National Revenue on issues affecting the non-profit sector.

In 2004 Andrea received the Canadian Business in the Arts Award for Innovative Partnership. She was recognized by the AFP Calgary Chapter as the 2007 Outstanding Fundraising Professional Award and in 2012 received the Queen's Jubilee Medal for her contributions to the non-profit sector in Canada. A graduate of Mt. St. Vincent University, she is an AFP Master Teacher and contributing author to five books on non-profit management, fundraising and global philanthropy.

Andrea is a native Islander who has resided in Calgary for 45 years. Now with one foot in the west and another in PEI, she will be relocating home in 2022. Her favourite place in PEI is in Keppoch, where she spent her time growing up at the family cottage. She considers her 'claim to fame' that she has never missed a summer in PEI and has instilled that same love in her three daughters.

A SUMMER BACK ON PEI

BY BRITTANY MACLEAN LAND STEWARDSHIP TECHNICIAN



Like many who grow up on the PEI and have a close connection to their island home, I was always aware of Island Nature Trust. I knew they protected land, but I didn't really know how they did so and to what extent. This summer, after some time spent going to school and working in New Brunswick, I was thrilled to be back on PEI and hired by INT as one of their seasonal Land Stewardship Technicians. It was an extremely busy field season, but thankfully I was working with the largest summer crew INT has ever had! The hard work started right away and our young team got to experience firsthand just what it takes to steward 65+ natural areas across PEI.

In early May we did our annual native tree and shrub plantings, where we were able to plant on 6 different Natural Areas. This was my first time going to one of INT's properties, and I was impressed by the diversity of each one I visited. To name just two examples: We planted on the Jenkins Complex NA, with mixed

Acadian Forests, trying to accelerate successional forest regeneration and in the Crown Point NA, a coastal habitat with large cliff faces, with an intention to reduce coastal erosion.

We conducted invasive species extractions in June, removing Small-flowered Jewelweed on our Hennessey NA. This species would otherwise take over, pushing out native plants, reducing diversity and overall resilience in the area. Monthly Emerald Ash Borer surveys filled the time in between. Monitoring 3 Natural Areas with known White Ash stands for early signs of the invasive beetle. With its presence in other provinces and no natural predators here in Canada, we want to catch any signs of it on PEI.

The summer was jam packed with outside time, traveling all over the island, seeing parts of the province I have never been before, even though I grew up here (did you know there was an Alaska PEI).

By far my favorite thing to do was bio-inventories of new



land acquisitions. We would go and take an inventory of every species we could find; I was able to really sharpen my plant and songbird identification skills in the process. It was on these properties where we would find rare species, including Canada Warbler and the Pink Stripped Oakworm Moth, a moth not yet recorded here on PEI.

Not only did we record individual species, but communities within these habitats, giving us a sense of how productive and ecologically significant that parcel was. Our most recent project was the removal of 2 old forestry bridges. They were a point source for erosion and instream sedimentation, not only on our Natural Area but further downstream. Removing these improved fry/parr habitat for growing brook trout, and by leaving the untreaded timber on site we created valuable amphibian habitat.

I have been with INT now for 6 months, in that short time we have already done a tone of great work, on our Natural Areas and within the community. I am very excited to see what the rest of the fall field season will bring here with INT.

BEER FOR GOOD:

Copper Bottom Brewing Supports the Island Nature Trust with New Give Back Initiative.

There's something brewing in Three Rivers, where Montague's Copper Bottom Brewing announced the results from their first beer in their Give Back Initiative, which it is describing as 'a series of beer releases that aim to make good in our community'. The Initiative was created with the goal of donating a portion of beer sales towards local non-profits, community groups, and local artists within the province.

The brewery's first release in the series was called Plover, a German style lager that was brewed exclusively to support INT's vital stewardship work to ensure the long-term survival of the endangered piping plover. In total, Copper Bottom was able to raise \$3,202 for the Island Nature Trust.



"Saving endangered species on PEI is only possible with the help of the community. Copper Bottom and its many supporters have joined us in our conservation mission, and for that we thank them. We also appreciate that the Plover beer was a damn fine beer!"

Shannon Mader, Species-at-Risk Program Manager



**MEET
CHARLOTTE
THOMPSON
OUR NEW
FUND
DEVELOPMENT
COORDINATOR**

Growing up on the beaches of PEI, I have always been passionate about conservation and protecting our environment along with the fragile ecosystems within it.

As a recent MBA graduate with a Bachelor's degree in Business & Environmental Sustainability, I am looking to connect with businesses and individuals who want to make a difference in their community and who express a dedication toward our island's longevity and the future. If you, or someone you know, is looking to make impactful partnerships within their community and contribute to INT's conservation efforts, please do not hesitate to reach out!

**WOULD YOU LIKE
TO BECOME A
CORPORATE
SPONSOR?**

INT is excited to build and nurture strong relationships with ecologically minded local businesses or organizations.

To express an interest, contact our Fund Development Coordinator, Charlotte Thompson at;
development@islandnaturetrust.ca or call 902-566-9150

YOUNG NATURALISTS



DID YOU KNOW?

Ruby-throated Hummingbirds are a shiny emerald green and bright white colour. The males have a ruby throat. They are so colourful that you can watch them glitter like jewels in the sun before they zip off in a flash since they fly extremely fast, beating their wings 50 times in one second!

Hummingbirds are the smallest birds in the world, and the Ruby-throated Hummingbird weighs only 3 grams, which is the same weight as a penny! They like to live in open areas like meadows, building their tiny nests out of bits of plants and the silk from spider webs.

Ruby-throated Hummingbirds have a very long tongue that they use to drink nectar out of flowers. You can attract them and other pollinators to your garden by planting tubular flowers like Daffodils, Honeysuckle, and Morning glory, or putting up a special hummingbird feeder filled with sugar water.

Welcome to the Young Naturalists page.

Learn about an Island species every newsletter, solve puzzles and express your creative side!

Feel free to share your achievements on social media but don't forget to tag us @Island Nature Trust and use the hashtag;

#givingbacktonature

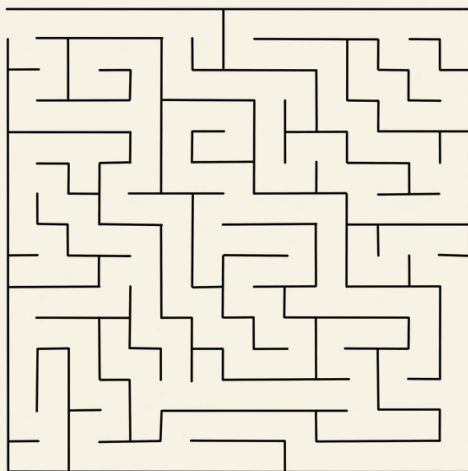
RUBY-THROATED HUMMINGBIRD

Archilochus colubris



COLOR ME IN!

HELP THE RUBY-THROATED HUMMINGBIRD GET TO ITS NEST



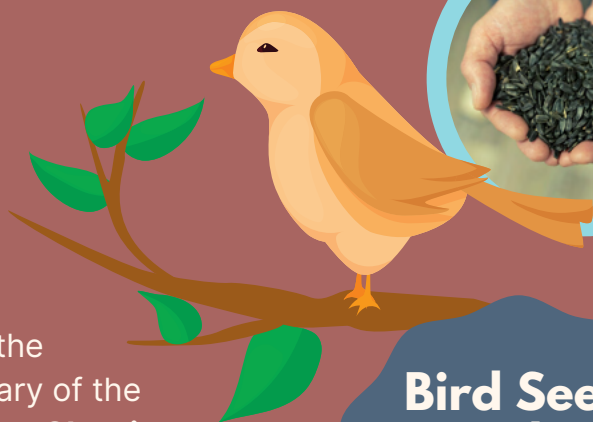
WORD SEARCH

P	I	L	E	C	I	S	S	L	O	Q	Y	H	M	J
H	O	V	E	R	S	P	I	D	E	R	W	E	B	I
G	Y	C	R	H	A	P	P	T	J	W	B	P	Y	N
F	P	Z	X	G	O	E	O	N	U	V	P	I	F	A
E	K	Z	G	F	L	W	L	U	E	P	X	R	R	B
E	R	U	I	L	N	Z	L	G	N	C	O	N	U	D
D	U	I	A	O	E	O	I	V	O	X	T	B	J	Z
E	B	W	D	W	M	E	N	O	O	V	D	A	J	K
R	Y	X	D	E	R	Z	A	D	R	C	W	U	R	R
M	F	W	F	R	A	I	T	Y	J	X	S	Q	Q	T
M	Y	G	V	S	L	O	O	W	D	S	N	V	R	L
M	A	N	V	G	D	Y	R	G	B	B	D	Y	I	V
J	T	T	N	S	D	P	D	L	H	I	U	H	I	R
P	Q	T	Z	L	C	Q	B	R	Y	Y	D	Y	R	B
W	X	Y	Z	K	K	G	A	R	D	E	N	O	I	H

**RUBY
EMERALD
HOVER
NECTAR
FLOWERS
POLLINATOR
BIRD
SPIDERWEB
GARDEN
FEEDER**



NEWS



2021 marked the 27th anniversary of the **Autumn Birding Classic** - a long-term partnership for the Trust's land conservation program and as a bird migration monitoring count for early autumn.

4 teams and 12 participants took part, raising \$2,590 to date.

118 bird species were recorded over the course of a day. Notable observations include Say's Phoebe, Philadelphia Vireo, Long-eared owl, Norther Cardinal and Dickcissel.

Bird Seed Sale NOVEMBER 2nd-13th



This years' annual bird seed sale, hosted by our partners at Phillips Agri Services is taking place at their store from **November 2nd to the 13th**. Part proceeds of the sale are donated to the Trust.

For more info visit: www.phillipsagri.ca/wild-bird-food

15



MEMBERSHIP RENEWAL

Please take a moment to fill out the form below and return it to the address above with your membership fee. You can also renew and pay easily online at: www.islandnaturetrust.ca Thank you for your support!

Name: _____

Mailing Address: _____ Postal Code: _____

Telephone: _____ E-mail: _____

Membership Category:

Student (\$10) ☐ Single (\$20) ☐ Family (\$25) ☐ Life (\$500) ☐ Donation \$: _____

(Tax receipts will be issued for all donations)

Payment Method: Cheque ☐ Money Order ☐ Visa ☐ Master Card ☐

Card Number: _____ Exp. Date: _____ Signature: _____

OUR STAFF



Bianca McGregor
Executive Director
exdir@islandnaturetrust.ca



Megan Harris
Director of Conservation
conserve@islandnaturetrust.ca



Janell Smith
Business Services Manager
finance@islandnaturetrust.ca



Ben Russell
Communications Manager
comms@islandnaturetrust.ca



Charlotte Thompson
Fund Development Coordinator
development@islandnaturetrust.ca



Shannon Mader
Species-At-Risk Program Manager
species@islandnaturetrust.ca



Amy Frost-Wicks
Land Stewardship Program Manager
land@islandnaturetrust.ca



Saundra LeClair
Farmland Birds Coordinator
landbirds@islandnaturetrust.ca



Jordan Smith
Office Coordinator
admin@islandnaturetrust.ca



Vicki Johnson
Piping Plover Coordinator
plover@islandnaturetrust.ca



Brittany MacLean
Land Stewardship Tech
brittany@islandnaturetrust.ca

WHO ARE WE...?

Island Nature Trust is a non-profit, membership-driven, private registered charity dedicated to permanent protection of natural areas in Prince Edward Island. We acquire lands through purchase and donation for protection and help private landowners protect their own properties through legislation and promotion of good land management practices. We also protect species-at-risk, restore lands and undertake public nature education.

Contact Us:

112 Longworth Avenue
PO Box 265 Charlottetown,
PE C1A 5A8

Phone: 902-892-7513

E-mail: admin@islandnaturetrust.ca

**NEW
OFFICE**



Find Us Online: www.islandnaturetrust.ca



facebook.com/islandnaturetrust



instagram.com/islandnaturetrust

BOARD OF DIRECTORS

Executive: President – Gordon MacKay, Vice President – Marie-Ann Bowden, Treasurer – George Mason, Secretary – Patricia Caporaso, Past President – June Sanderson

Group Representatives: Keila Miller - PEI Wildlife Federation, Vacant - Nature PEI

General Directors: Andrea McManus, Bruce Craig, Jan Matejcek, Joyce Dewar, Kim Horrealt, Roger Coffin



INT